



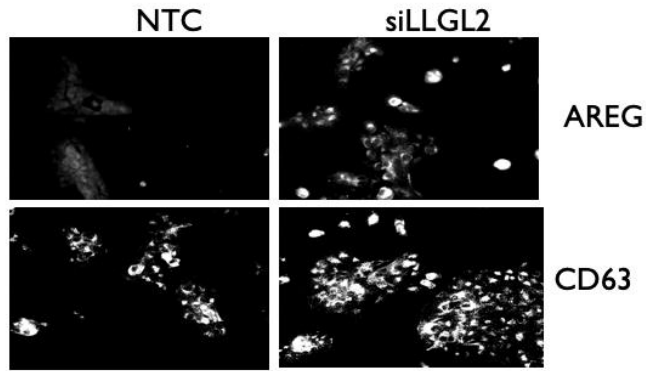
Dr. Stephanie Walker
Professor
Biochemistry

Courses Taught

Chemical Concepts
Introductory Chemistry
Biochemistry I + Lab
Biochemistry II
Special Topics in Biochemistry
Cancer Biology
Junior/Senior Seminar

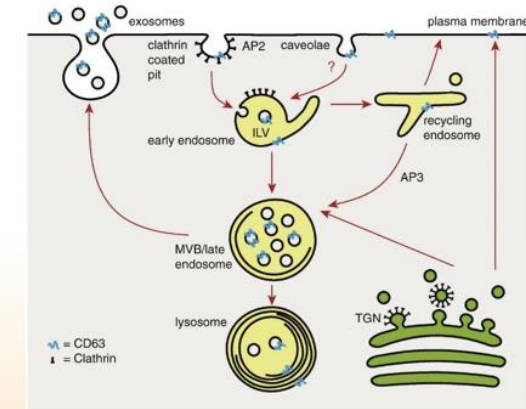
Dr. Walker's Research

Silencing of a CRB3 “antagonist,”
LLGL2 and effects on polarity and
proliferation

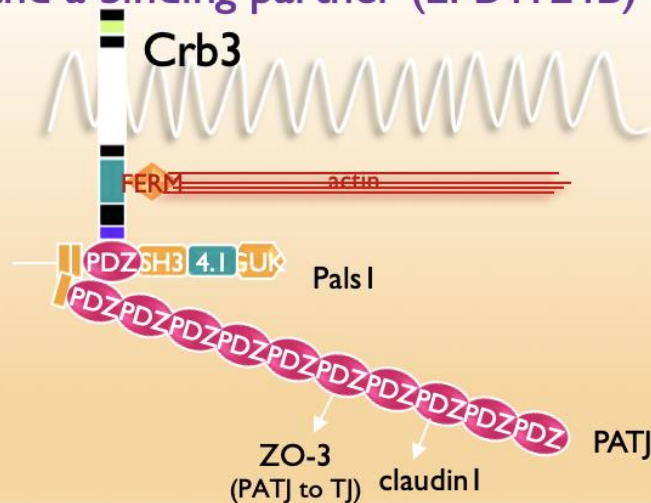


How do cell polarity
and proliferation
work in concert to
maintain tissue
structure and
organization?

Studies on CRB-dependent trafficking
events, especially exosome secretion



Characterize the interaction of CRB3
and a binding partner (EPB4/L4B)



Studies on the
polarity protein
Crumbs3 and its role
in hyperproliferation
of mammary
epithelial cells